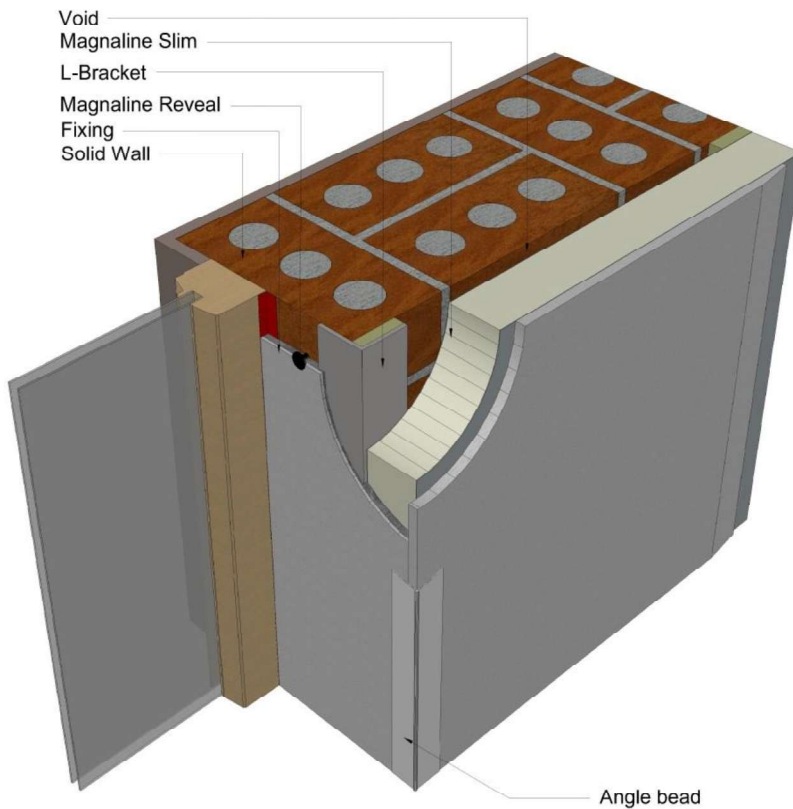


# MAGNALINE REVEAL

Thermally Robust

## INFORMATION & INSTALLATION GUIDE

### MAGNALINE REVEAL INTERNAL WALL INSULATION



- R-value 0.80m<sup>2</sup>K/W
- Reduces heat losses through reveals.
- Reduces risk of condensation in internally homes and buildings.
- Reduces risk of mould growth
- Reduces risk of obscuring window function
- It increases the overall performance of your insulation upgrade

# REVEAL

## Information & Installation Guide



### The Problem

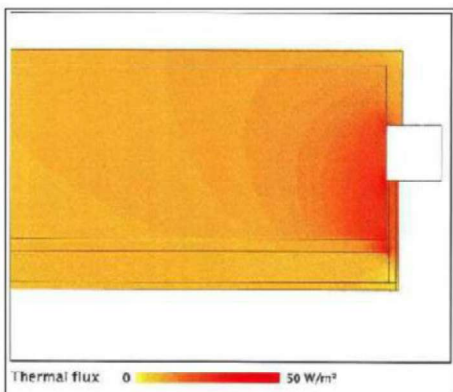
When installing internal wall insulation, the reveals around windows and doors are often left untreated due to lack of space to fit conventional insulation.

Failure to address these areas will lead to condensation, damp and mould related problems

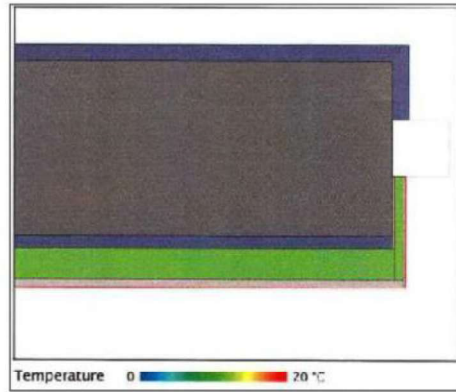


### The Solution

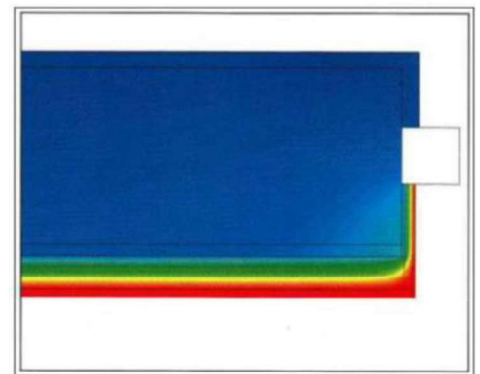
By combining Aerogel insulation, the worlds most efficient and thinnest Insulation Material, with an extremely robust 6mm Magnesium board, Enviroform solutions have developed a 16mm thick reveal board. Magnaline Reveal, with a thermal resistance of 0.8m<sup>2</sup>k/w, reduces the heat loss at these critical junctions to eliminate the risk of condensation and mould related problems.



Magnaline Reveal Thermal Flux Image



Magnaline Reveal Temperature Image



Linear thermal transmittance $\Psi = 0.081 \text{ W/mK}$ <small>reciprocal (DEAP)</small>	$\Psi = 0.086 \text{ W/mK}$ <small>fixed a (p+pp)</small>	Temperature factor $f_{Rsi} = 0.875$
---	--	---

Magnaline Reveal Thermal Image

# REVEAL

## Information & Installation Guide



### Product

Magnaline reveal, is supplied in two different formats

#### Type I-

16mm x 1200mm x 2400mm

Type I does **NOT** contain a vapour control layer and is used with a Vapour open (VO) System



#### Type II-

16mm x 1200mm x 2400mm

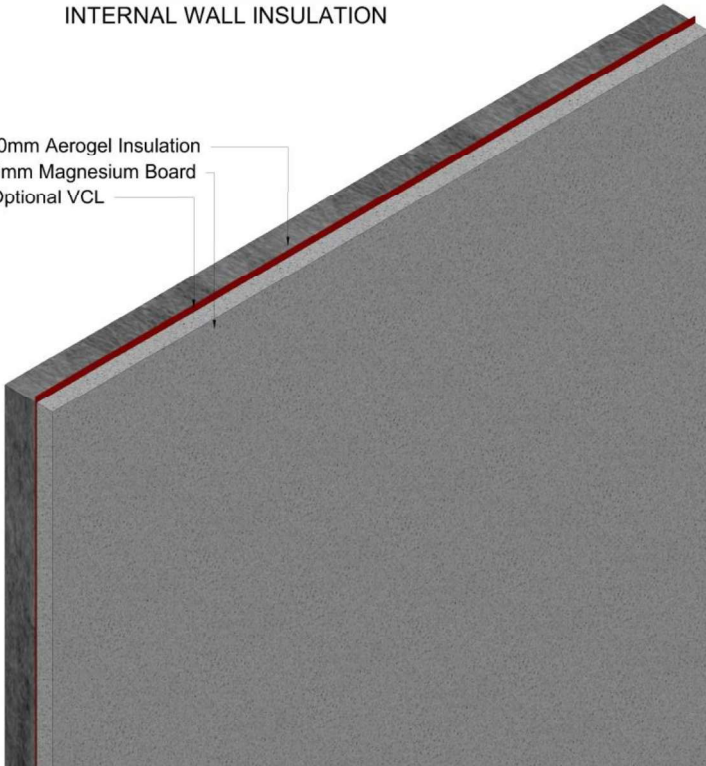
inc VCL

Type II has an integrated vapour control layer and used when installing a Vapour Tight (VT) System



### **MAGNALINE REVEAL** INTERNAL WALL INSULATION

10mm Aerogel Insulation  
6mm Magnesium Board  
Optional VCL



### Key Benefits

- R-value 0.80m<sup>2</sup>K/W
- Reduces heat losses through reveals.
- Reduces risk of condensation
- Reduces risk of mould growth
- Does not cover window frame
- Adds to the overall performance of your insulation upgrade

# REVEAL

## Information & Installation Guide

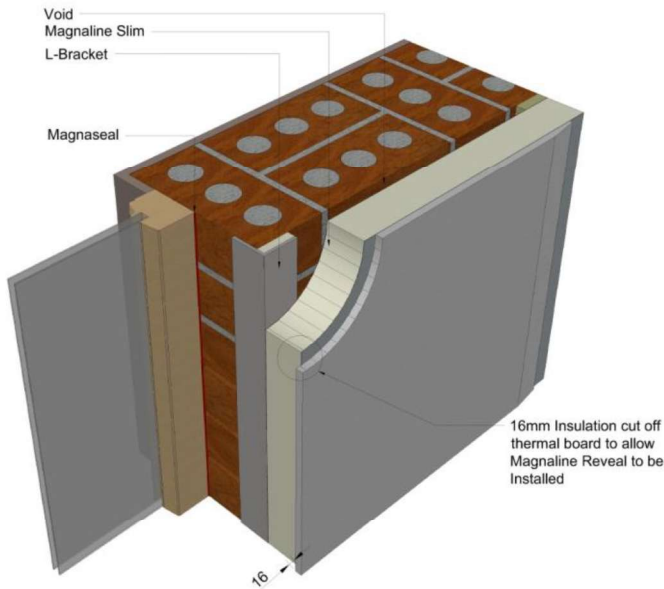
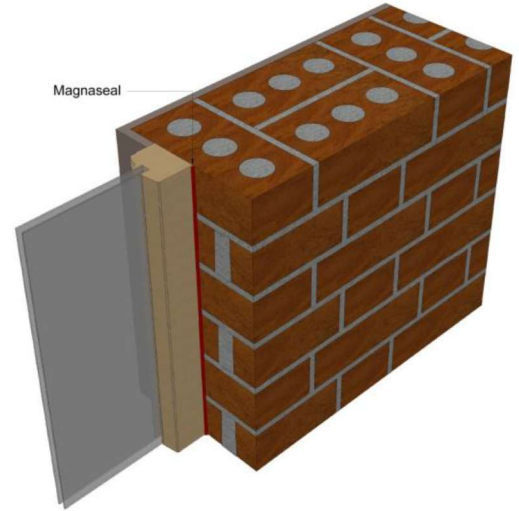


### INSTALLATION STEPS

#### Step 1 Preparation

The Junction between the window frame and the wall, (as per the drawing) must be sealed using MagnaSeal.

This provides an Air and Vapour tight seal which is critical to the overall performance of the Install



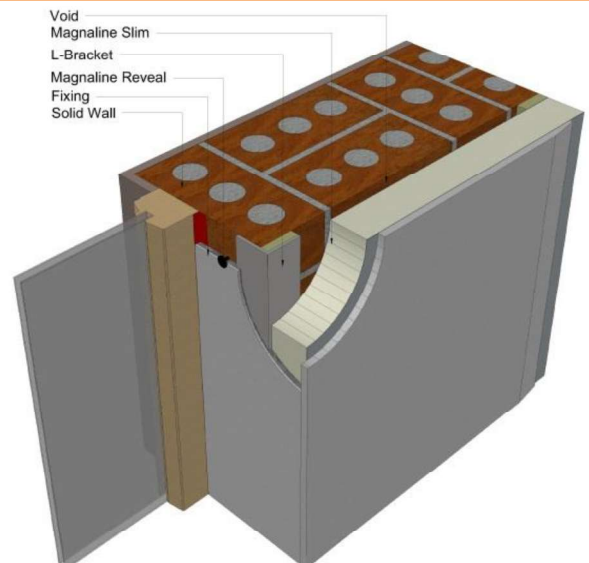
#### Step 2

16mm of the insulation on the back of the Thermal Laminate must be removed



#### Step 3

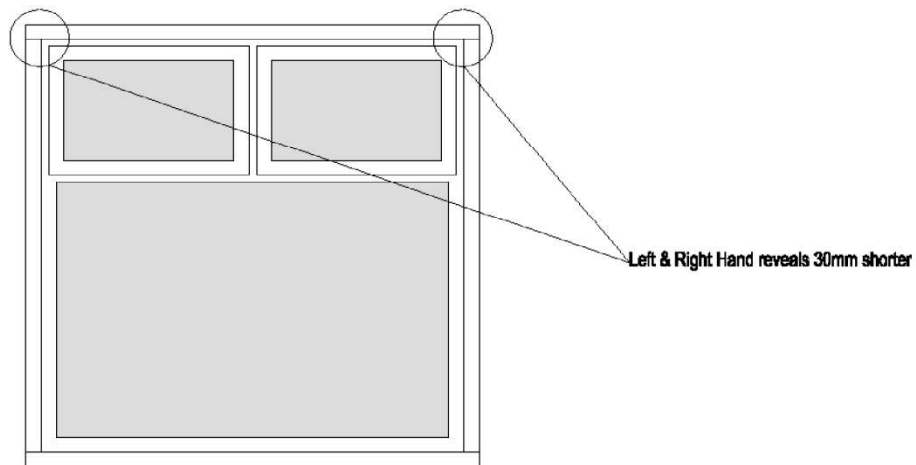
This Thermal Laminate is then fixed to the wall leaving the insulation flush with the edge of the existing reveal, and the board finishing 16mm into the window opening



# REVEAL

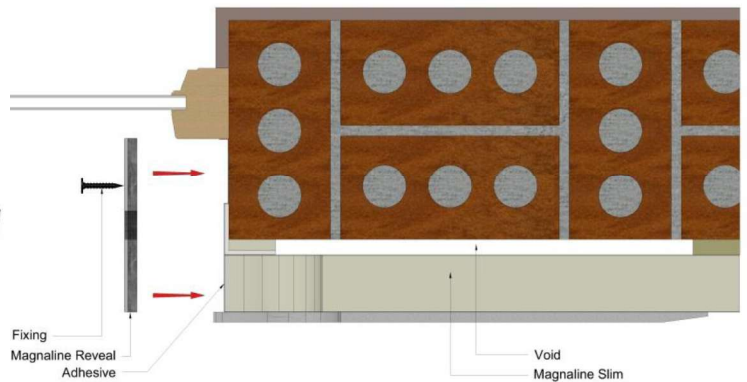
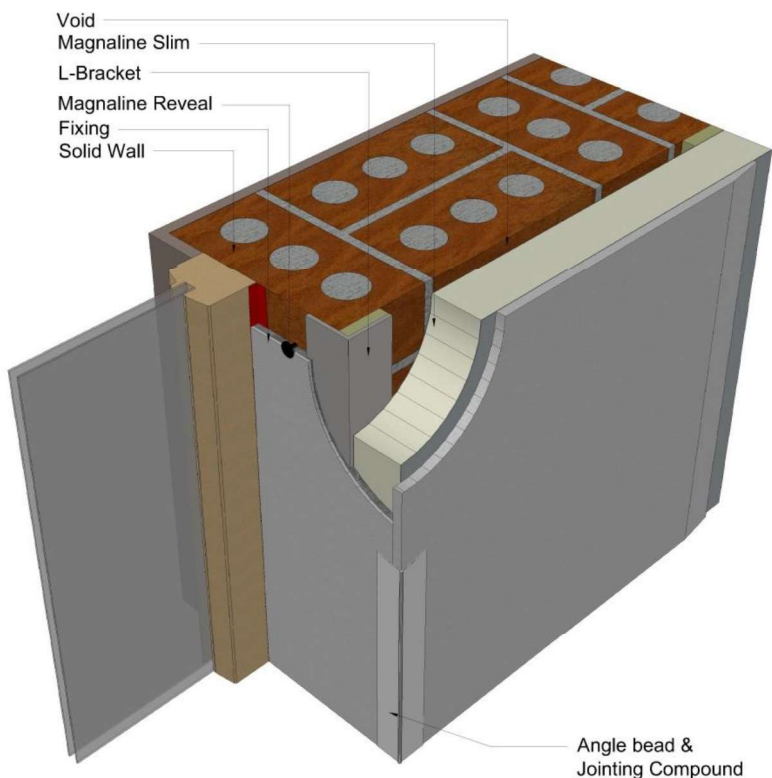
## Information & Installation Guide

### Step 4 - Cutting



- Measure Internal dimensions of window/door opening
- Mark the length and width of the reveal to be cut
- Cut using circular saw or handsaw

### MAGNALINE REVEAL INTERNAL WALL INSULATION



### Step 5 - Fixing

- Fix Head & Sill Reveals before left and right hand side
- Adhesively and mechanically fix reveals in place using 50mm plastic insulation pins and MagnaFoam
- Apply angle bead, jointing compound and dryline as per standard detail.